

TABLE OF CONTENTS

Introduction	
Credits and Copyrights	1
What is the Bundler XTension ?	2
General features	2
Trademarks	2
Quark [®] Disclaimer	2
Installation	
Backups	2
Serial Numbers	3
Functions	
Main Menu	3
Auto Find Defaults	3
Search Paths	3
Match Original s File Type	3
Special Instructions Setup	3
Modify Menu Items	4
Mover	4
Move Fonts	4
Move EPS Fonts	4
Move Preferences	4
Make Bundle	4
Bundle Naming	4
Move Preferences	4
Special Instructions	5
Doc Info Report	5
Delete Originals	5
Auto Find Graphics	5
Select File and Destination	5
Batch Move	5
Missing EPSF Colors	6
Move Defaults	6
Exclude Printer Fonts	6
Fonts in one suitcase	6
Printer and screen fonts in one folder	6
Extracting files from Bundle	6

Credits and Copyright

The Bundler XTension was developed by
CompuSense Ltd
Avondale House,
The Square, Ballincollig,
Cork,
Rep. of Ireland.

Tel. (353) -21-871394 or (353) -21-870528
Fax. (353) -21-874513
e-mail: compusen@indigo.ie

The ideas for the features in this XTension are a result of feedback from many QuarkXPress[®] users around the world. We continue to welcome suggestions on how the functionality can be further improved and enhanced.

This manual and the Bundler software are copyrighted, with all rights reserved. Under the copyright laws, this manual and software may not be copied or reverse engineered, in whole or in part, without the written consent of CompuSense Ltd

INTRODUCTION

What the Bundler Xtension is For

The Bundler is an XTension whose functionality is focused on the problems encountered by users dealing with the increasing numbers of mobile QuarkXPress documents. The basic concept behind it is: 'A QuarkXpress user with a document on their Macintosh should be able to create a "BUNDLE" a self extracting compressed file containing a copy of the document, all the graphic files, and all the screen and printer fonts in such a way that anybody opening the Bundle on a different Mac at a different time and/or place can be as certain as possible that they will find exactly the same environment and resources, and therefore will be the same as when it was saved.' As a consequence of the above design criteria, the Bundler is also an ideal archiving tool for QuarkXPress Documents.

General Features

The File Mover option allows you to select a file and specify a destination disk and/or folder where you want to copy the file. The document and all its linked graphics (Including DCS files if required), Screen and Printer fonts (Including and EPS fonts) will be transferred.

When moving or copying a file, the user may select to also move the XPress Preferences file and any other required auxiliary files at the same time.

If any linked graphic or Printer font files are missing, the Bundler provides an 'Auto Find' utility which is a high performance search tool that will scan through predefined volumes or folders for the required files. The user can completely control the process by specifying default search paths.

Before moving the document, the Bundler checks to ensure that all EPSF colors are present in the Document Color palette, if not, it will list the colors detailing the graphics in which the particular color appears. At this point it has an option to automatically create the required colors.

If desired, all the files moved will be compressed into a Self Extracting Archive or 'Bundle'. The naming convention used for the Bundle allows you to immediately identify whether it is complete or if font or required graphics etc. are missing.

When moving files the XTension will also optionally present a 'Special Instructions' Dialog which allows the user to direct the receiver as to what Print Medium, Film setting, Screen lines setting, etc. to use. Shipping and general comment fields are also provided. This feature also shows you what color plates are required for each individual page, therefore you can accurately instruct as to what plates are to be output on a page by page basis. All Items in the Special Instruction dialog are user configurable, therefore you can decide exactly what choices you would like to have in the Popup menus that appear.

The Batch Move option allows you to select a number of files which can be moved at the same time.

TradeMarks

QuarkXPress[®] and XTension are trademarks of Quark Inc.
Macintosh is a trademark of Apple Computer Corporation.
PostScript is a registered trademark of Adobe Systems, Inc.

Quark Disclaimer

QUARK, INC. MAKES NO WARRANTIES, EITHER EXPRESS OR IMPLIED, REGARDING THE ENCLOSED COMPUTER SOFTWARE PACKAGE, ITS MERCHANTABILITY, OR ITS FITNESS FOR ANY PARTICULAR PURPOSE. QUARK INC. DISCLAIMS ALL WARRANTIES INCLUDING, BUT NOT LIMITED TO THE WARRANTIES OF THE DISTRIBUTORS, RETAILERS AND DEVELOPERS OF THE ENCLOSED SOFTWARE.

WITHOUT LIMITING THE FOREGOING, IN NO EVENT SHALL QUARK, INC. BE LIABLE FOR ANY SPECIAL, INDIRECT, INCIDENTAL, OR CONSEQUENTIAL DAMAGES IN ANYWAY RELATING TO THE USE OR ARISING OUT OF THE USE OF THE ENCLOSED SOFTWARE. QUARK, INC.'S LIABILITY SHALL IN NO EVENT EXCEED THE TOTAL AMOUNT OF THE PURCHASE PRICE/LICENSE FEE ACTUALLY PAID FOR THE USE OF THE ENCLOSED SOFTWARE.

SOME STATES DO NOT ALLOW THE EXCLUSION OF IMPLIED WARRANTIES AND/OR THE EXCLUSION OR LIMITATION OF INCIDENTAL OR CONSEQUENTIAL DAMAGES, SO THESE EXCLUSIONS AND LIMITATIONS MAY NOT APPLY IN PARTICULAR COUNTRIES

Backups

We recommend you make a back up of your original XTension disk, and keep the original in a safe place.

Installation

Like all CompuSense XTensions, the Bundler is easy to install and use: Simply place the XTension file 'The Bundler' into the QuarkXPress program folder and launch QuarkXPress. New menus, commands and dialog boxes are seamlessly integrated into the program.

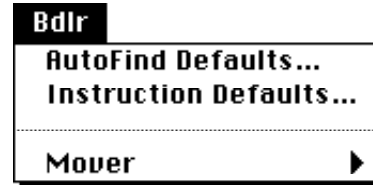
If you wish to remove the XTension's functionality from XPress move the XTension file to a folder other than the one containing the XPress program.

Serial Numbers

Each CompuSense XTension that is sold, has been configured to run with an individual copy of QuarkXPressfi (i.e tied to the serial number). If the XTension is launched with a copy of XPress having a serial number other than this, the XTension's functionality will not be available.

Main Menu

Once QuarkXPress is launched with the Bundler XTension present in the program folder, The item 'Bdlr' will appear on the main menu bar.

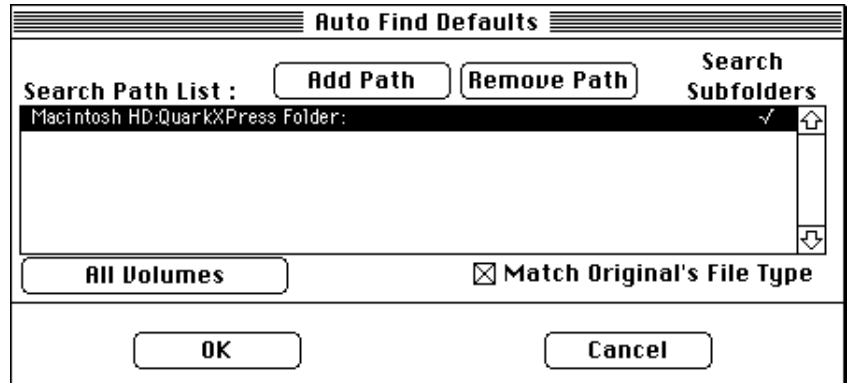


Autofind Defaults

If the File you want to move happens to have some missing graphic or printer font files, then you can set up some default folders and/or volumes that the Bundler will scan in an effort to locate the relevant files. By selecting the 'AutoFind Defaults' option from the main menu the following dialog is presented:

Search Paths

The 'Add Path' and 'Remove Path' buttons allow you to designate the folders where searching will take place. Folders will be searched in the order that they are listed.



If the 'All Volumes' button is selected then every volume currently mounted is added to the list.

Clicking under the Search Subfolders heading controls whether subfolders within the specified folder will be searched or not.

Match Original's File Type

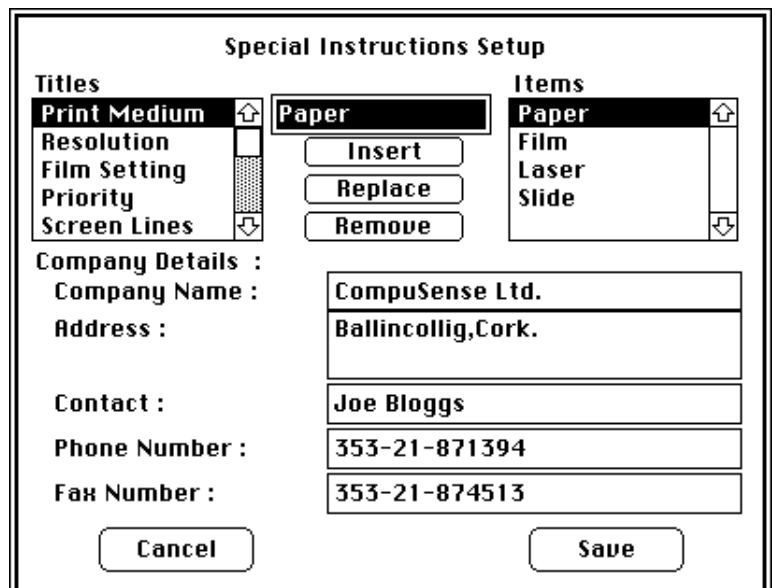
If the Match Original's File Type check box is turned on then the XTension will only consider a missing file to be found if both the file name and the file type match that of the original graphic file in the QuarkXPress document. If this option is off then only the file names are compared in the search process.

Special Instructions Setup

At the end of the 'Move File' procedure the XTension will optionally present a 'Special Instructions' Dialog which allows you to direct the recipient as to what Print Medium, Film setting, Screen line setting, etc. to use. All Items in the Special Instruction dialog are user configurable.

You use the 'Instructions Defaults' menu option to customise this dialog to your particular needs.

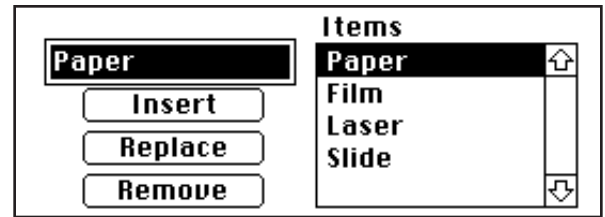
The 'Titles' list on the left hand side contains the names of the seven popup menus provided in the Special Instructions dialog. By clicking on any of these you can edit or alter the menu items for that particular menu.



FUNCTIONS

Modify Menu Items

The Items listed on the right reflect the current contents of the popup. The 'Insert', 'Replace' and 'Remove' buttons can be used to modify the old menu items.



Details listing the creator's contact name, address, etc., will be included as part of the Special Instructions file that is created. You can enter your own relevant particulars through this dialog.

Mover

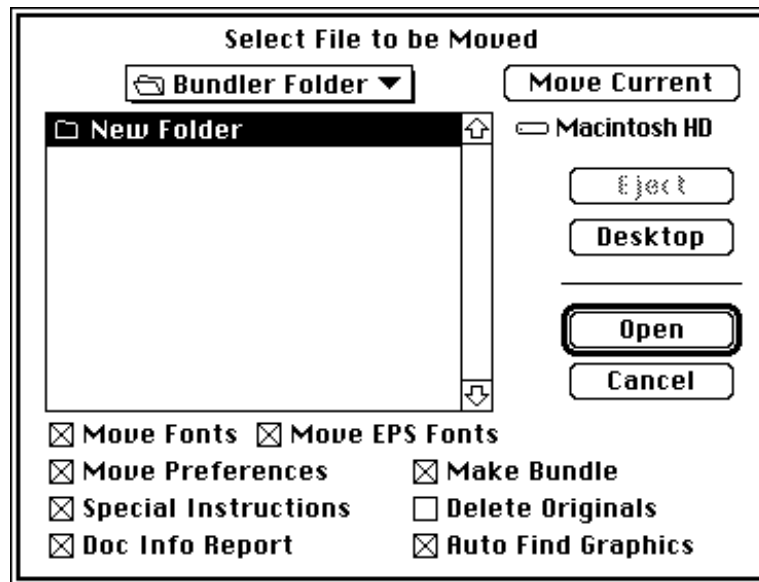
The Mover submenu provides a number of utilities to help you to quickly and easily prepare a job for delivery to a service bureau for output. It will copy all the required high resolution graphic files as well as the original file to a designated destination.

The 'Mover' submenu presents you with three options:



By selecting FileMover, a standard file dialog will appear allowing you to choose the file to be moved.

Move Fonts



By clicking on the 'Move Fonts' check box, you can specify that fonts used in the document should also be moved. All the screen as well as the specified printer fonts that can be located will be transferred.

Move EPS Fonts

When the 'Move Fonts' check box is selected, a 'Move EPS Fonts' check box is made available. This option allows you to move screen and printer fonts that are used by EPS files. The PostScript font name is matched up with an installed TrueType font, if one exists; if not, then a bitmapped font is copied.

Note: Most font manufacturers require that you license their font software before use. It is the user's responsibility to ensure that they are not in breach of copyright law.

Move Preferences

By clicking on the 'Move Preferences' check box, the XPress Preferences file will be moved to the same destination as the other files.

Make Bundle

If the 'Make Bundle' option is on, then all the files collected will be compressed into a Self Extracting Archive or 'Bundle'. The naming convention used for the Bundle allows you to immediately identify whether it is complete or if font or other items are missing.

If the Bundle is incomplete, i.e.: It hasn't got everything it needs for the document's recreation then an error report will be automatically produced showing what is missing.

Bundle Naming

A successful or complete Bundle is named as follows :

!X.<document name>.sfx

Eg: If the document "My Doc" was moved to a Bundle the complete Bundle would be named "!X.My Doc.sfx".

If errors occurred in the move these are denoted in the Bundle name by inserting extra characters after the !X but before the full stop :

- 'F' - Denotes missing Screen or Printer Fonts
- 'G' - for missing Graphic Files
- 'C' - for missing EPSF Colors
- 'x' - denoting Required XTensions necessary.

Examples using the above named document:

- "!XF.My Doc.sea" - Some Fonts are missing.
 - "!XFG.My Doc.sea" - Some Fonts and Graphics are missing.
- The Error Report will detail fully exactly what is missing.

Special Instructions

If the 'Special Instructions' check box is turned on then a Dialog will be displayed at the end of the move procedure to allow the user to give additional directions to the receiver on how to output the job.

Use the popups to specify what Print Medium, Film setting, Trapping, Screen line setting, and Resolution to use. Popup menus to instruct the Bureau as to the priority of the job as well as delivery instructions are included.

This dialog also allows you to see exactly what color plates are required for each individual page, therefore you can accurately instruct as to what plates to be output on a page by page basis.

All Items in the Special Instruction dialog are user configurable, this procedure is described on page 3.

Doc Info Report

This option will produce a text report for the document being moved. It includes general document attributes, as well as information about graphics, fonts, colors, style sheets etc. The report that is produced will be placed in the destination folder or Bundle.

Delete Originals

The 'Delete Originals' check box allows you to specify whether the original copies of the moved files should be deleted once the files have been moved. Note. This option will also cause all the original linked graphics to be deleted. However the Preference file and the fonts will not be affected.

Auto Find Graphics

By selecting the 'Auto Find Graphics' check box you ensure that the Bundler will search for any missing graphic files using the criteria specified in the Auto Find Defaults (As described on page 3).

Move current

If an XPress document is open then that file may be moved by choosing the 'Move Current' button.

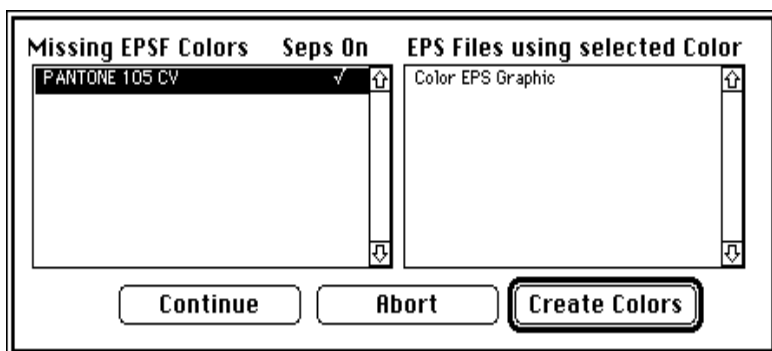
Select Destination

Once the file to be moved has been selected, then a dialog to select the destination folder will be presented. Use the standard controls to select the destination folder. The 'New Folder' button can be used to create a new destination folder. Once the destination has been chosen the XTension will proceed to move all the files and fonts as required. Status dialogs displaying progress will appear.

Batch Move

This allows you to select a number of files to be moved at the same time. Files can be added to the batch by choosing the Add button. The Individual Bundle for each Document checkbox gives the option of creating either a separate archive for each QuarkXPress document in the batch or a single archive containing all of the batch files.

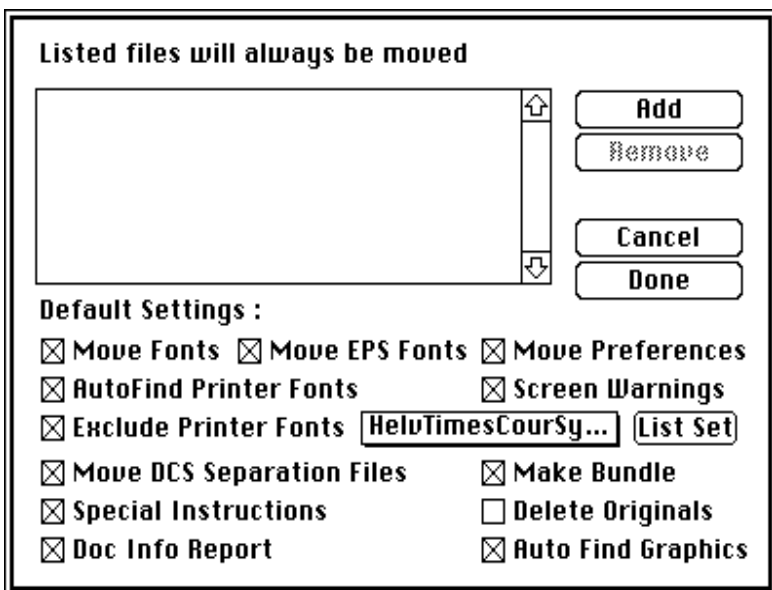
Missing
EPSF
Colors



Before moving the document, the Bundler checks to ensure that all EPSF colors are present in the Document, if not, it will present a dialog containing two lists. The list on the left details all the missing colors. By selecting a particular color from this list, the right most list will indicate the relevant EPS files in which this color resides. The 'Create Colors' button allows you to add all of the colors to the document palette. You can specify the separation setting for each color by clicking the list beneath the 'Seps On' heading.

Move
Defaults

The 'Move Defaults' menu item allows the user to set defaults for the move dialogs and also to select files that will always be moved to the destination every time the 'FileMover' option is used. These may include special files that may be necessary for printing or other required files.



The 'Add' and 'Remove' buttons allows you to select or delete files as required.

The functionality of the majority of the Check box items has already been explained, (See page 4 and 5)

Exclude
Printer
Fonts

As certain fonts are always resident in some Postscript printers it may be redundant to move them. The 'Exclude Printer Fonts' check box and Popup menu allow you to specify what printer fonts NOT to copy. Three sets of fonts are predefined. It is possible to see what fonts are included in the set by clicking on the 'List Set' button. This will display a list of all the printer fonts that will not be copied if Exclude Printer Fonts is on.

Screen fonts
in one
Suitcase

- Screen Fonts in one suitcase
- Printer and Screen Fonts in one folder

Printer and
Screen fonts
in one folder

The Screen Fonts in one suitcase allows you to have separate suitcase files for each family of fonts or else for them to be all copied into one suitcase.

If Printer and Screen Fonts in one folder is selected, then the printer fonts will be copied to the same folder as the Screen fonts suitcase(s).

Once the document to be moved as well as the destination has been chosen the Bundler will proceed to move all files and fonts as required. If the 'Make Bundle' option has been selected then a self extracting archive file will be created.

Extracting
files from
the Bundle

To extract the files from this archive, double click on the file. A dialog allowing you to specify the destination of the expanded files will be presented.

A new folder will be created and all the archive files will be stored in this folder.

